

2

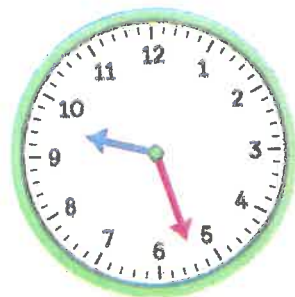
Tell the time. Write in a.m. or p.m.

(a)



20 minutes past [ ]  
in the morning  
[ ]

(b)



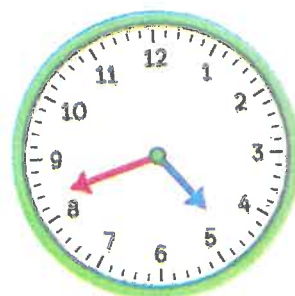
[ ] minutes past 9  
at night  
[ ]

(c)



15 minutes to [ ]  
in the morning  
[ ]

(d)



[ ] minutes to 5  
in the afternoon  
[ ]

3

Where should the missing minute hand be pointing?

(a) 23 minutes past 2

(b) 8 minutes to 10

